

Vander Lee - Iluminado

Flute

♩=75

2

7

7

19

2

4

25

14

2

4

43

48

2

4

7

2

4

59

62

Vander Lee - Iluminado

Trumpet in B \flat

$\text{♩} = 75$

opcional junto com viol.(surd)



Vander Lee - Iluminado

Violin 1

♩=75

5

7

16

23

14

41

46

7

58

61

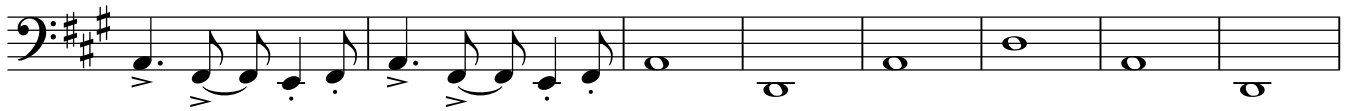
Vander Lee - Iluminado

Violoncello

♩=75



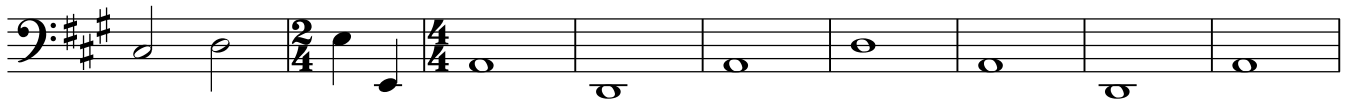
5



13



20



29



37



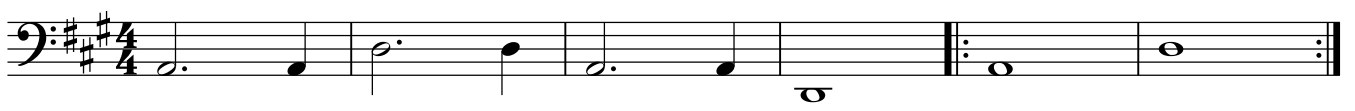
45



53



58



Vander Lee - Iluminado

♩=75

flute

A⁹ D⁹ A⁹ D⁹ A⁹

6

Canto

D⁹ A⁹ D⁹ A⁹ D⁹/A

11

A⁹ D⁹ A C[#]7 D A Bm⁷

16

C[#]m Dmaj⁷ E⁷(sus4) F[#]m⁷ C[#]7 Dmaj⁷ A Bm⁷ C[#]m⁷ Dmaj⁷

E⁷(sus4) A⁹ D⁹ A⁹

25

D⁹/A A⁹ D⁹ A⁹ D⁹/A

Voice

30 A⁹ D⁹ A C^{#7} D A Bm⁷

35 C^{#m} Dmaj⁷ E7(sus4) F^{#m7} C^{#7} Dmaj⁷ A Bm⁷ C^{#m7} Dmaj⁷

E7(sus4) A⁹ D⁹/A A⁹ D⁹/A A⁹

46 D⁹/A A⁹ D⁹/A E7(sus4) C^{#7} D

51 A Bm⁷ C^{#m} Dmaj⁷ E7(sus4) F^{#m7} C^{#7} Dmaj⁷ A Bm⁷

56 C^{#m7} Dmaj⁷ E7(sus4) A⁹ D⁹ A⁹

D⁹ A⁹ D⁹/A

Sempre Diminuendo.

Vander Lee - Iluminado

Flute

Trumpet in B \flat

opcional junto com viol.(surd)

flute

Voice

A 9 D 9 A 9

Violin 1

Violoncello

$\text{♩} = 75$

Fl.

Tpt.

Voice

Vln. 1

Vc.

4

D 9 A 9 D 9

7 *A⁹ Canto* *D⁹* *A⁹* *D⁹/A* *A⁹*

Voice

Vc.



12

Fl.

Voice

Vln. 1

Vc.

D⁹ *A* *C#7* *D* *A* *Bm⁷*



16

Fl.

Voice

Vln. 1

Vc.

C#m *Dmaj7* *E7(sus4)* *F#m7* *C#7* *Dmaj7* *A* *Bm7*

20

Fl.

Tpt.

Voice

Vln. 1

Vc.

C#m7 Dmaj7 E7(sus4) A⁹ D⁹

24

Fl.

Tpt.

Voice

Vln. 1

Vc.

A⁹ D⁹/A A⁹ D⁹

28

Voice

Vc.

A⁹ D⁹/A A⁹ D⁹ A

33 C#7 D A Bm7 C#m Dmaj7 E7(sus4) F#m7

Voice

Vc.

Detailed description: This system contains measures 33 through 40. The voice part is in treble clef with a key signature of three sharps (F#, C#, G#) and a 4/4 time signature. The melody consists of eighth and sixteenth notes with various rests. The bass clef part (labeled 'Vc.') is in bass clef with the same key signature and time signature, featuring a simple harmonic accompaniment of quarter and eighth notes. Above the voice staff, the following chords are indicated: C#7, D, A, Bm7, C#m, Dmaj7, E7(sus4), and F#m7.

37 C#7 Dmaj7 A Bm7 C#m7 Dmaj7 E7(sus4)

Voice

Vc.

Detailed description: This system contains measures 37 through 40. The voice part continues in the same key signature and time signature. The melody features a change in rhythm at measure 39, with a 2/4 time signature indicated above the staff. The bass clef part continues with a simple harmonic accompaniment. Above the voice staff, the following chords are indicated: C#7, Dmaj7, A, Bm7, C#m7, Dmaj7, and E7(sus4).

41

Fl.

Tpt.

Voice

A9 D9/A A9 D9/A

Vln. 1

Vc.

Detailed description: This system contains measures 41 through 44. It includes five staves: Flute (Fl.), Trumpet (Tpt.), Voice, Violin 1 (Vln. 1), and Bass clef instrument (Vc.). The key signature remains three sharps and the time signature is 4/4. The flute and violin parts play a melodic line of eighth notes. The trumpet part plays a rhythmic accompaniment of eighth notes. The voice part has a melody with some rests. The bass clef part plays a simple harmonic accompaniment. Above the voice staff, the following chords are indicated: A9, D9/A, A9, and D9/A.

45

Fl.

Tpt.

Voice

Vln. 1

Vc.

A⁹ D⁹/A A⁹ D⁹/A

49

Voice

Vc.

E7(sus4) C^{#7} D A Bm⁷ C^{#m} Dmaj7

53

Voice

Vc.

E7(sus4) F^{#m7} C^{#7} Dmaj7 A Bm⁷ C^{#m7} Dmaj7 E7(sus4)

58

Fl.

Tpt.

Voice

Vln. 1

Vc.

A⁹ D⁹ A⁹



61

Fl.

Tpt.

Voice

Vln. 1

Vc.

D⁹ A⁹ D⁹/A

Sempre Diminuindo.